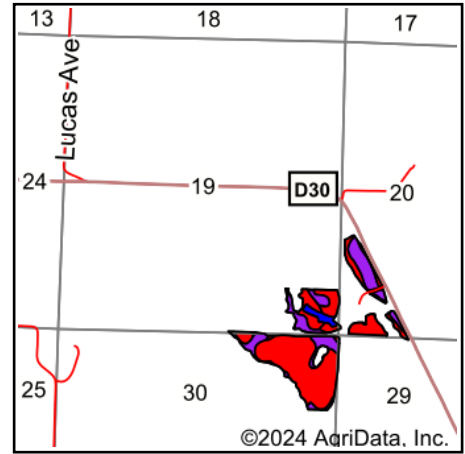
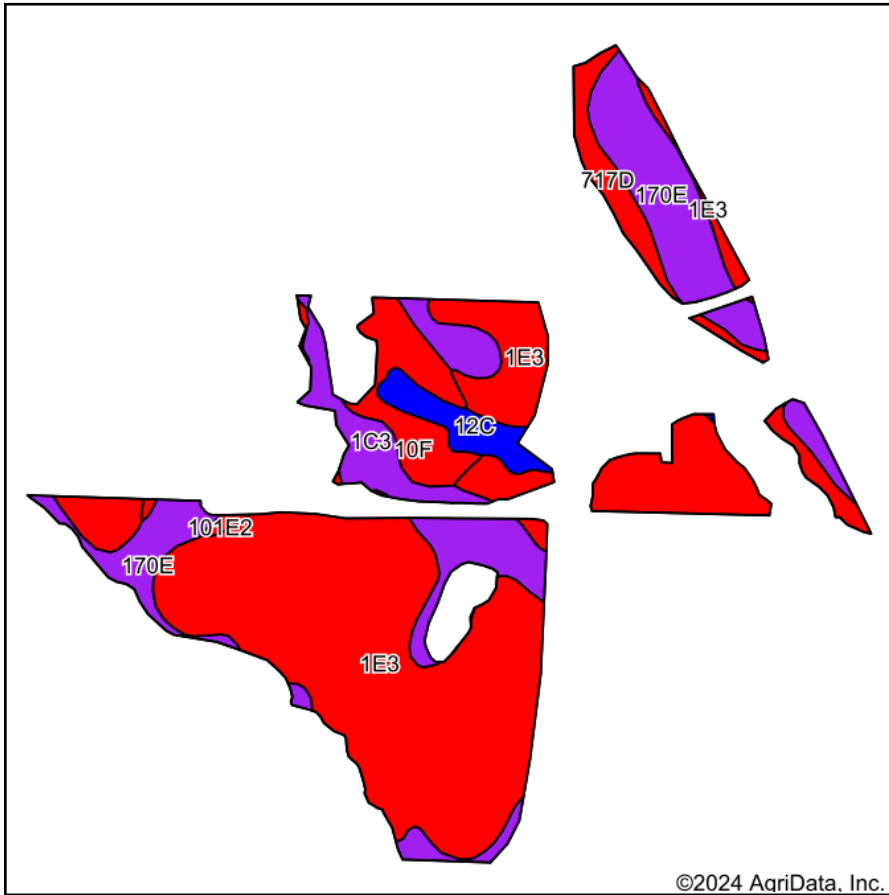


# Soils Map



State: **Iowa**  
 County: **Woodbury**  
 Location: **19-88N-43W**  
 Township: **Kedron**  
 Acres: **59.03**  
 Date: **10/14/2024**

©2024 AgriData, Inc.

Maps Provided By:  
  
 CUSTOMIZED ONLINE MAPPING  
 © AgriData, Inc. 2023 [www.AgriDataInc.com](http://www.AgriDataInc.com)



Soils data provided by USDA and NRCS.

Area Symbol: IA193, Soil Area Version: 33

Code	Soil Description	Acres	Percent of field	CSR2 Legend	Non-Irr Class *c	Irr Class *c	CSR2**	CSR	*n NCCPI Soybeans	
1E3	Ida silt loam, 14 to 20 percent slopes, severely eroded	34.69	58.8%			IVe	18	28	54	
170E	Napier-Castana silt loams, 9 to 20 percent slopes	9.44	16.0%			IIIe	56	34	76	
1C3	Ida silt loam, 5 to 9 percent slopes, severely eroded	6.39	10.8%			IIIe	58	46	61	
10F	Monona silt loam, 20 to 30 percent slopes	3.44	5.8%			VIe	26	22	17	
717D	Napier-Gullied land complex, 5 to 14 percent slopes	2.88	4.9%			IIIe	42	5	9	
12C	Napier silt loam, 5 to 9 percent slopes	1.95	3.3%			IIIe	89	58	87	
101E2	Monona-Ida silt loams, 14 to 20 percent slopes, eroded	0.24	0.4%			IVe	40	35	61	
<b>Weighted Average</b>							<b>3.77</b>	<b>*-</b>	<b>32.5</b>	<b>30.5</b>
									<b>*n 55</b>	

\*\*IA has updated the CSR values for each county to CSR2.

\*n: The aggregation method is "Weighted Average using all components"

\*c: Using Capabilities Class Dominant Condition Aggregation Method

\*-: Irr Class weighted average cannot be calculated on the current soils data due to missing data.