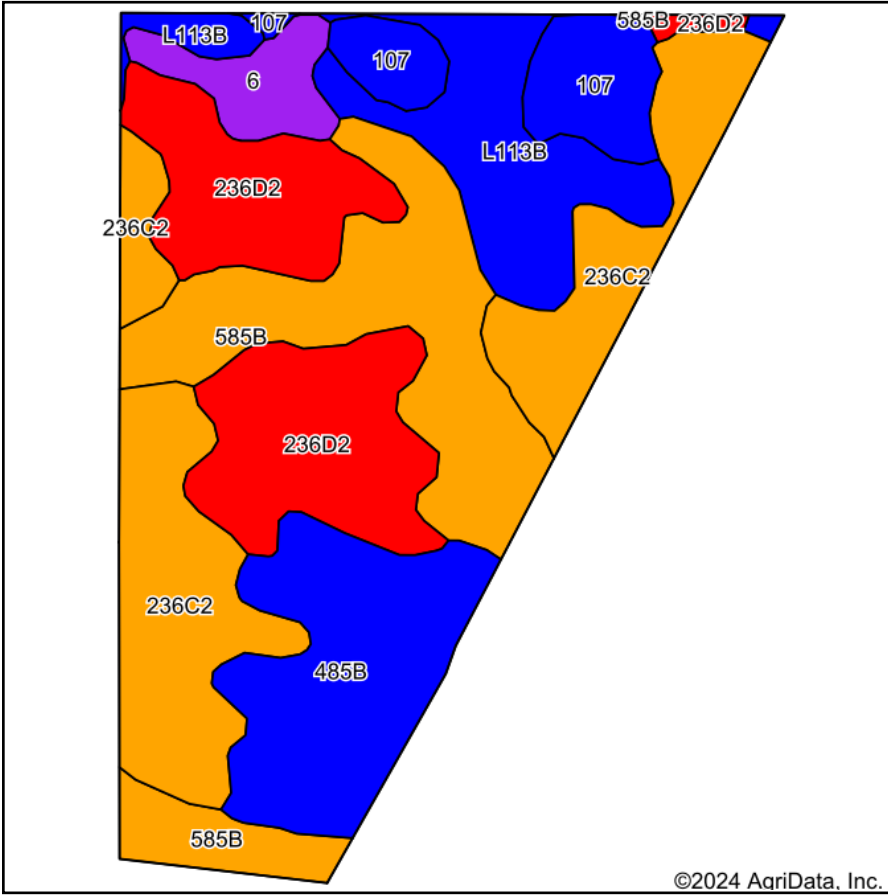
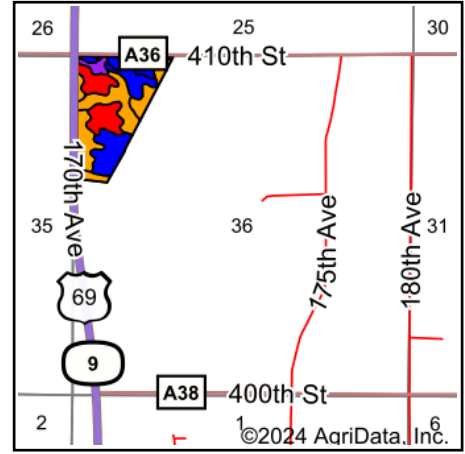


# Soils Map



Soils data provided by USDA and NRCS.







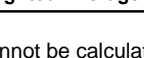


State: **Iowa**  
 County: **Winnebago**  
 Location: **36-99N-24W**  
 Township: **Newton**  
 Acres: **44.06**  
 Date: **2/5/2024**

Maps Provided By:  
  
 CUSTOMIZED ONLINE MAPPING  
 © AgriData, Inc. 2023 [www.AgriDataInc.com](http://www.AgriDataInc.com)



Area Symbol: IA189, Soil Area Version: 33

Code	Soil Description	Acres	Percent of field	CSR2 Legend	Non-Irr Class *c	CSR2**	CSR	*n NCCPI Soybeans	
236C2	Lester loam, 6 to 10 percent slopes, moderately eroded	10.03	22.8%		IIIe	76	59	69	
236D2	Lester loam, 10 to 16 percent slopes, moderately eroded	8.96	20.3%		IVe	49	49	63	
585B	Coland-Spillville complex, 0 to 5 percent slopes	8.72	19.8%		IIw	80	64	89	
485B	Spillville loam, 2 to 5 percent slopes	6.53	14.8%		Ile	88	85	87	
L113B	Reedslake-Le Sueur complex, 1 to 6 percent slopes	5.24	11.9%		Ile	85		81	
107	Webster clay loam, 0 to 2 percent slopes	2.93	6.7%		IIw	86	83	82	
6	Okoboji silty clay loam, 0 to 1 percent slopes	1.65	3.7%		IIIw	59	57	74	
<b>Weighted Average</b>						<b>2.67</b>	<b>74.2</b>	<b>*-</b>	<b>*n 76.9</b>

\*\*IA has updated the CSR values for each county to CSR2.

\*\*IA has updated the CSR values for each county to CSR2.\*- CSR weighted average cannot be calculated on the current soils data, use prior data version for csr values.

\*n: The aggregation method is "Weighted Average using all components"

\*\*IA has updated the CSR values for each county to CSR2.\*- CSR weighted average cannot be calculated on the current soils data, use prior data version for csr values.\*c: Using Capabilities Class Dominant Condition Aggregation Method